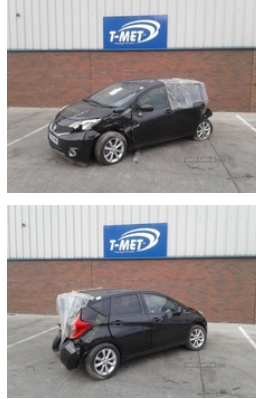




84 Armagh Road Dungannon, , BT71 7JA  
Option 3: 02837549092

## Nissan Note ACENTA PREMIUM DIG-S | Dec 2016



Engine and gearbox are both in good working condition as are the rest of the parts that are still available. For any queries on a part for this car or any other particular car give T-met a call on 028 37 549092 option 3. Breaking a wide range of cars with hundreds in stock

### Vehicle Features

Alarm, Alloy wheels, Anti-lock Braking System, Audio remote control, Auxiliary input socket, Bluetooth connection, Body coloured bumpers, Climate control, Cloth seat trim, Cruise control, Curtain airbags, Digital radio, Drivers airbag, Electric door mirrors, ESP, Folding rear seats, Front armrest, Front electric windows, Front fog lights, Heated door mirrors, Immobiliser, Isofix child seat anchor points, Navigation system, Passenger airbag, Radio/CD, Rear armrest, Rear electric windows, Rear parking sensor, Rear wiper, Remote central locking, Reverse parking aid, Side airbags, Steering wheel mounted controls, Traction control, Trip computer, Tyre pressure monitor, Tyre repair kit, USB/iPod interface

|                         |             |
|-------------------------|-------------|
| <b>Fuel Type:</b>       | Petrol      |
| <b>Transmission:</b>    | Automatic   |
| <b>Colour:</b>          | Black       |
| <b>Engine Size:</b>     | 1198        |
| <b>CO2 Emission:</b>    | 119         |
| <b>Tax Band:</b>        | C (£35 p/a) |
| <b>Body Style:</b>      | MPV         |
| <b>Insurance group:</b> | 10E         |
| <b>Reg:</b>             | KT66HMX     |

### Technical Specs

| DIMENSIONS                          |         |
|-------------------------------------|---------|
| <b>Length:</b>                      | 4100mm  |
| <b>Width:</b>                       | 1695mm  |
| <b>Height:</b>                      | 1530mm  |
| <b>Seats:</b>                       | 5       |
| <b>Luggage Capacity (Seats Up):</b> | 411L    |
| <b>Gross Weight:</b>                | 1590KG  |
| <b>Max. Loading Weight:</b>         | 446KG   |
| PERFORMANCE & ECONOMY               |         |
| <b>Fuel Consum. (Urban Cold):</b>   | 45.6MPG |
| <b>Fuel Consum. (Extra Urban):</b>  | 62.8MPG |
| <b>Fuel Consum. (Combined):</b>     | 55.4MPG |
| <b>Fuel Tank Capacity:</b>          | 41L     |
| <b>Number Of Gears:</b>             | 1 SPEED |
| <b>Top Speed:</b>                   | 108MPH  |
| <b>Acceleration 0-100 km/h:</b>     | 12.6s   |
| <b>Engine Power BHP:</b>            | 97BHP   |