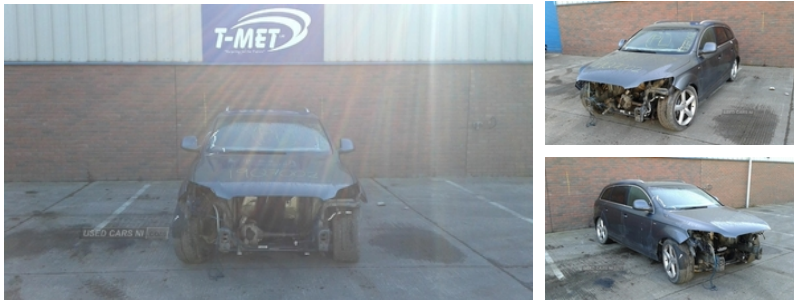




84 Armagh Road Dungannon, , BT71 7JA  
Option 3: 02837549092

## Audi Q7 4.2 TDI Quattro S Line 5dr Tip Auto | Jun 2008



Engine and gearbox are both in good working condition as are the rest of the parts that are still available. Breaking a wide range of cars with hundreds in stock For any queries on a part for this car or any other particular car give T-met a call on ARMAGH 028 37 549092 option 3

MALLUSK 028 90 838176

CAMPSIE 028 71 812727

### Vehicle Features

2x cupholders in 3rd row seating area, 3 point seatbelts on all seats, 12V socket in centre console and luggage area, ABS+Electronic Brake force Distribution, Adaptive air suspension, Air suspension rear axle, Alarm, Alarm with interior monitoring, Alloy wheels, Aluminium look air vent surrounds, Anti-lock Braking System, Audio remote control, Auto climate control, Auto dimming rear view mirror, Body coloured bumpers, Centre console+cupholders/coin box/storage, Climate control, Coat hooks, Cruise control, Curtain airbags, Door mirrors electrically foldable, Double load floor with storage compartment + dirt resistant tray, Driver and passenger airbags, Drivers airbag, Electric adjustable/heated/folding door mirrors, Electric adjustable front seats, Electrically adjustable drivers seat, Electrically adjustable passenger seat, Electrically operated child locks on rear doors, Electric door mirrors, Electric front+rear windows, Electric front lumbar adjustment, ESP, Exit lights in front doors, Folding rear seats, Foot operated parking brake, Front/rear reading lights, Front armrest, Front centre comfort armrest with storage + cupholders, Front door pocket bottle holders, Front electric windows, Front fog lights, Front head restraints, Front passenger airbag deactivation, Front passenger seat isofix location point, Front seatback cargo nets, Front seat belt height adjuster, Front side airbags, Front sports seats, Green tinted heat insulating glass, Headlight washers, Heated door

<b>Fuel Type:</b>	Diesel
<b>Transmission:</b>	6 Speed Auto
<b>Colour:</b>	Grey
<b>Engine Size:</b>	4134
<b>CO2 Emission:</b>	294
<b>Tax Band:</b>	M (£735 p/a)
<b>Body Style:</b>	Sport utility vehicle
<b>Insurance group:</b>	43E
<b>Reg:</b>	IXZ4475

### Technical Specs

DIMENSIONS	
<b>Length:</b>	5086mm
<b>Width:</b>	1983mm
<b>Height:</b>	Nmm
<b>Seats:</b>	7
<b>Luggage Capacity (Seats Up):</b>	775L
<b>Gross Weight:</b>	3245KG
<b>Max. Loading Weight:</b>	795KG
PERFORMANCE & ECONOMY	
<b>Fuel Consum. (Urban Cold):</b>	19MPG
<b>Fuel Consum. (Extra Urban):</b>	31.7MPG
<b>Fuel Consum. (Combined):</b>	25.5MPG
<b>Fuel Tank Capacity:</b>	100L
<b>Number Of Gears:</b>	6 SPEED
<b>Top Speed:</b>	146MPH
<b>Acceleration 0-100 km/h:</b>	6.4s
<b>Engine Power BHP:</b>	322BHP

mirrors, Heated rear window with time switch, Heated windscreen washer jets, Immobiliser, Isofix child seat anchor points, Isofix rear child seat preparation, Lighting pack - Q7, Locking wheel bolts, Luggage compartment cover, Luggage net, Lumbar support, OEM sound system, Overhead console with sunglasses holder, Partial leather seat trim, Passenger airbag, Polished aluminium roof rails, Radiator grille is S Line look, Radio/CD, Rain and light sensors, Rear armrest, Rear centre armrest with 2 cupholders, Rear door pockets with bottle holders, Rear electric windows, Rear headrests, Rear parking sensor, Rear seats fold flat, Rear wiper, Remote central locking, Reverse parking aid, Service interval indicator, Servotronic PAS, Side airbags, SIDEGUARD airbag system, S Line body styling, S line scuff plates, Space saver spare wheel, Spare wheel, Split folding rear seats, Sports seats, Steering wheel mounted controls, Storage net in luggage compartment, Sunvisors with illuminated vanity mirrors, Tool kit, Tow away protection, Traction control, Trip computer, Two 12V sockets in rear, Warning triangle and first aid kit, Windscreen wash-nozzle heated