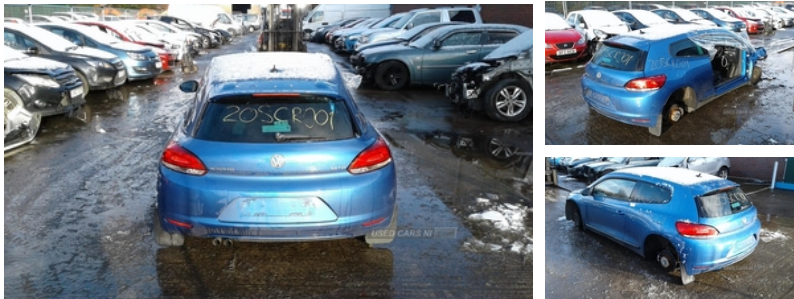




84 Armagh Road,, Dungannon, BT71 7JA
Option 3: 02837549092

Volkswagen Scirocco 2.0 TDI GT 3dr | Aug 2009



Engine and gearbox are both in good working condition as are the rest of the parts that are still available. Breaking a wide range of cars with hundreds in stock. For any queries on a part for this car or any other particular car give T-met a call on ARMAGH 028 37 549092 option 3.

Vehicle Features

'Lights On' warning buzzer, 2 bag hooks in luggage compartment, 2 cupholders, 2 rear 3 point safety belts, 2 rear head restraints, 2 Zone electronic climate control with automatic air recirculation, 8 speakers, 12V socket in luggage compartment, 50/50 split folding rear seat backrest, ABS with Brake Assist, ACC - Adaptive chassis control, Alarm with interior protection, Anti-lock Braking System with Brake Assist, Auto dimming rear view mirror/rain sensor, Automatic activation of hazard warning lights, Body colour door handles, Body colour door mirrors with integral indicators, Body coloured bumpers, Brushed aluminium decorative inserts, Brushed aluminium instrument surrounds, Coming home function, Diesel particulate filter, Door open warning reflectors, Driver/Front Passenger airbags, Driver/passenger active head restraints, Dusk sensor + auto driving lights, Dust/pollen filter, Easy entry slide seats (access to rear seats), Electrically heated + operated door mirrors, Electric front windows, Electronic engine immobiliser, ESP with EDL + ASR, Exterior temperature gauge, Front and rear curtain airbags, Front centre armrest with storage compartment, Front fog lights, Front footwell illumination, Front reading lights, Front seat side impact airbags, Heat insulated tinted glass 65% light absorbing from B pillar back, Height/reach adjust steering wheel, Height adjustable front 3 point seatbelts + pretensioners, Illuminated vanity mirrors, Interior light with delay, Intermittent rear wash/wipe, Isofix Preparation 2 Rear child seats, Leather gear knob, Leather handbrake grip, Leather trimmed three spoke

Fuel Type:	Diesel
Transmission:	Manual
Colour:	Blue
Engine Size:	1968
CO2 Emission:	134
Tax Band:	E (£195 p/a)
Body Style:	Hatchback
Insurance group:	24E
Reg:	GRZ7364

Technical Specs

DIMENSIONS	
Length:	4256mm
Width:	1810mm
Height:	1404mm
Seats:	4
Luggage Capacity (Seats Up):	292L
PERFORMANCE & ECONOMY	
Fuel Consum. (Urban Cold):	42.8MPG
Fuel Consum. (Extra Urban):	67.3MPG
Fuel Consum. (Combined):	55.4MPG
Fuel Tank Capacity:	50L
Number Of Gears:	6 SPEED
Top Speed:	00129MPH
Engine Power BHP:	138.1BHP

steering wheel, Lockable/illuminated air conditioned glovebox, Luggage compartment cover, Luggage compartment lighting, Matt Chrome decorative inserts in centre console, Multi-function steering wheel, Multifunction computer - Highline, Passenger airbag deactivation system, Rear roof spoiler, Remote central locking with 2 remote folding keys, Remote fuel flap release, Rev counter, SD card slot, Seatbelt warning, Service interval indicator, Speed sensitive variable PAS, Speed sensitive variable Power Assisted Steering, Sports front seats, Steel space saver spare wheel, Storage compartments in doors, Two tone horn