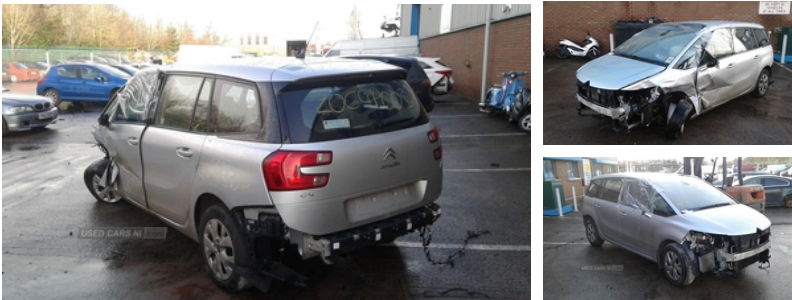




84 Armagh Road Dungannon, , BT71 7JA  
Option 3: 02837549092

## Citroen C4 1.6 e-HDi 115 Airdream VTR+ 5dr | May 2014



Engine and gearbox are both in good working condition as are the rest of the parts that are still available. Breaking a wide range of cars with hundreds in stock. For any queries on a part for this car or any other particular car give T-met a call on ARMAGH 028 37 549092 option 3.

### Vehicle Features

'Guide me home' headlamps, 2 individual fold flat 3rd row seats, 3 point seatbelts on all seats, 6 speakers, 7" touch screen, 12V accessory sockets - front and rear, Adaptive driver and front passenger airbags, Aircraft type trays in front seat backrests, Anti-lock Braking System + EBD + EBA, Automatic activation of hazard warning lights, Automatic boot locking, Automatic door locking, Automatic lights and wipers, Bluetooth with USB and AUX input, Body colour bumpers, Body colour door handles, Body colour door mirrors, Child lock indicator, Connecting box, Courtesy light in boot, Cruise control + speed limiter, Cup holders, DAB Digital radio, Double optic headlights, Dual zone automatic air conditioning, Electric folding door mirrors, Electric front/rear windows with one touch/anti pinch, Electric heated door mirrors, Electronic parking brake, ESP, Fold flat passenger seat with storage drawer, Front and rear (row 2) curtain airbags, Front and rear courtesy reading lights, Front armrests, Front fog lights, Front headrests, Front lateral airbags, Front seat back storage pockets, Front seatbelt pretensioners with force limiters, Gear selection indicator, Height/tilt adjustable driver's seat, Hill start assist, Illuminated air conditioned front passenger glovebox, Interior lights activated when doors unlocked, Leather steering wheel with audio controls, LED daytime running lights, Oil level indicator, Ondulice cloth upholstery, Passenger airbag deactivate switch, Rear air vents, Rear headrests, Rear parking sensor, Rear top tether child seat ISOFIX attachment, Rear wiper, Remote central locking + deadlocks, Remote fuel cap

<b>Fuel Type:</b>	Diesel
<b>Transmission:</b>	Manual
<b>Colour:</b>	Silver
<b>Engine Size:</b>	1560
<b>CO2 Emission:</b>	105
<b>Tax Band:</b>	B (£20 p/a)
<b>Body Style:</b>	MPV
<b>Insurance group:</b>	19A
<b>Reg:</b>	EA14BWG

release, Service indicator, Split folding rear seats, Super wide panoramic acoustic windscreen, Three foldable/retractable rear head restraints [row 2], Three individual sliding/fold flat rear seats [row 2], Traction control, Transponder immobiliser, Trip computer, Tyre pressure monitor, Under floor storage compartment [row 2], Variable Power Assisted Steering