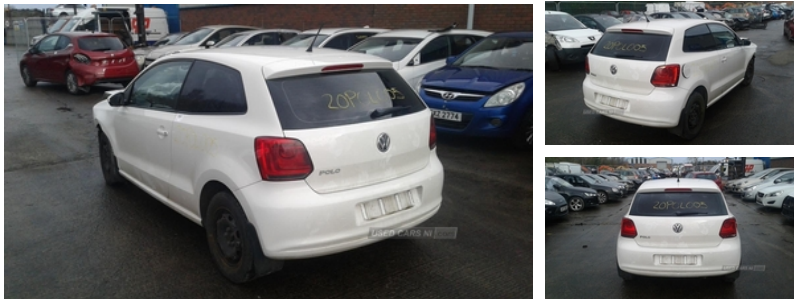




84 Armagh Road,, Dungannon, BT71 7JA  
Option 3: 02837549092

## Volkswagen Polo 1.2 60 S 3dr | Mar 2012



Engine and gearbox are both in good working condition as are the rest of the parts that are still available. For any queries on a part for this car or any other particular car give T-met a call on 028 37 549092 option 3. Breaking a wide range of cars with hundreds in stock

### Vehicle Features

'Lights On' warning buzzer, 2 bag hooks in luggage compartment, 2 cupholders, 3 point height adj front seatbelts + pretensioners, 3x3 point rear seatbelts, 4 grab handles, 12V socket with cover, ABS, Air recirculation system, Anti-lock Braking System, Black high gloss trim, Body coloured bumpers, Body coloured side sills, Centre console storage, Cirrus cloth upholstery, Daytime running lights, Delay courtesy light function, Driver/passenger sunvisors and vanity mirrors, Driver/Passenger whiplash optimised head restraints, Driver and passenger airbags, Driver seat height adjust, Dust/pollen filter, Electric front windows, Electronic engine immobiliser, ESP with EDL + ASR, Folding rear seatbacks, Front door pockets, Front head restraints, Front side airbags, Front wash/wipe with interval delay, Full size spare wheel, Glovebox, HBA (Hydraulic Brake Assist), Heated rear window with auto timer, Heating/ventilation unit with 4 speed fan, Heat insulating tinted glass, High gloss black finish B pillar, Instrument panel - Illumination control, Isofix Preparation 2 Rear child seats, Load lip protective shield, Luggage compartment cover, Luggage compartment lighting, Note pad holder, Note pad holder, PAS - speed related, pen holder and coin holder in glove box, pen holder and coin holder in glove box, Power Assisted Steering - speed related, Reach adjustable steering column, Rear head restraints, Rear windscreen washer and wiper with interval delay, Service interval indicator, Steering column rake adjustment, Three spoke steering wheel, Trip computer, Warning buzzer and light for front

<b>Fuel Type:</b>	Petrol
<b>Transmission:</b>	Manual
<b>Colour:</b>	White
<b>Engine Size:</b>	1198
<b>CO2 Emission:</b>	128
<b>Tax Band:</b>	D (£165 p/a)
<b>Body Style:</b>	Hatchback
<b>Insurance group:</b>	3E
<b>Reg:</b>	PE12CHF

### Technical Specs

DIMENSIONS	
<b>Length:</b>	3970mm
<b>Width:</b>	1682mm
<b>Height:</b>	1485mm
<b>Seats:</b>	5
<b>Gross Weight:</b>	1550KG
<b>Max. Loading Weight:</b>	558KG

PERFORMANCE & ECONOMY	
<b>Fuel Consum. (Urban Cold):</b>	38.7MPG
<b>Fuel Consum. (Extra Urban):</b>	62.8MPG
<b>Fuel Consum. (Combined):</b>	51.4MPG
<b>Fuel Tank Capacity:</b>	45L
<b>Number Of Gears:</b>	5 SPEED
<b>Top Speed:</b>	98MPH
<b>Acceleration 0-100 km/h:</b>	16.1s
<b>Engine Power BHP:</b>	59BHP

seatbelts unfastened