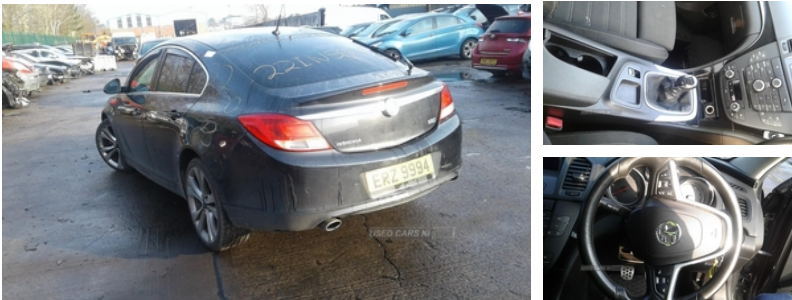




84 Armagh Road Dungannon, , BT71 7JA  
Option 3: 02837549092

## Vauxhall Insignia 2.0 CDTi SRi [160] 5dr | Jan 2010



ENGINE AND GEAR BOX ARE PERFECT. WE HAVE OVER A THOUSAND CARS IN STOCK WITH A GOOD RANGE OF BOTH OLD AND FRESH VEHICLES. WE OFFER FREE DELIVERY ON ALL PARTS THROUGHOUT IRELAND. PLEASE CALL\* ARMAGH 028 37 549092 OPTION 3\*CAMPSE 028 71812727\*MALLUSK 028 90836252

### Vehicle Features

3 point rear seatbelts x3, 4 way electrically adjustable lumbar support for drivers seat, 60/40 Split fold rear seat/load through facility, ABS, Active safety front seat head restraints, Aluminium pedals, Ambient interior lighting, Automatic lighting control, Body colour bumpers, Body colour door handles, Body colour electric adjustable heated door mirrors, Centre rear head restraint, Chrome effect window side mouldings, Cruise control, Driver/Front Passenger airbags, Driver/front passenger side airbags, Electric front windows, Electric height adjustable driver seat, Electric rear windows, Electronic parking brake, Ergonomic sports front seats with extendable seat cushion, ESP, Front centre armrest with storage compartment, Front fog lights, Front map reading lights, Front seat backrest storage nets, Full size curtain airbags, Illuminated vanity mirrors, Immobiliser, Leather gearknob, Leather sports steering wheel, Lowered and uprated sports suspension, PAS, Reach + rake adjustable steering column, Rear cupholders, Rear reading lights x 2, Rear wiper, Remote central deadlocking, Remote control alarm, Service indicator, Sports instrumentation, Steering wheel mounted audio controls, Trip computer

<b>Fuel Type:</b>	Diesel
<b>Transmission:</b>	Manual
<b>Colour:</b>	Black
<b>Engine Size:</b>	1956
<b>Body Style:</b>	Hatchback
<b>Insurance group:</b>	22E
<b>Reg:</b>	ERZ9994

### Technical Specs

DIMENSIONS	
<b>Length:</b>	4830mm
<b>Width:</b>	1856mm
<b>Height:</b>	1498mm
<b>Seats:</b>	5
<b>Luggage Capacity (Seats Up):</b>	530L
<b>Gross Weight:</b>	2145KG

PERFORMANCE & ECONOMY	
<b>Fuel Consum. (Urban Cold):</b>	36.7MPG
<b>Fuel Consum. (Extra Urban):</b>	60.1MPG
<b>Fuel Consum. (Combined):</b>	48.7MPG
<b>Fuel Tank Capacity:</b>	70L
<b>Number Of Gears:</b>	6 SPEED
<b>Top Speed:</b>	134MPH
<b>Acceleration 0-100 km/h:</b>	9.5s
<b>Engine Power BHP:</b>	158.2BHP