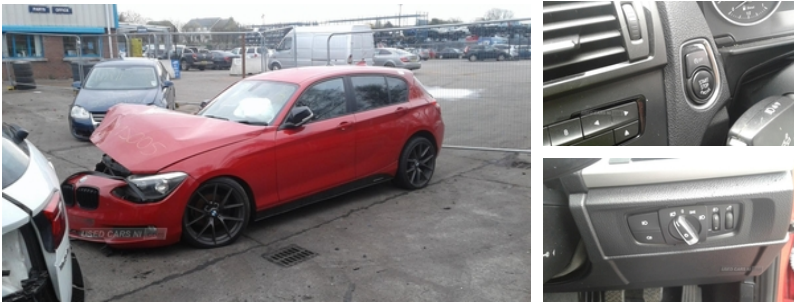




84 Armagh Road Dungannon, , BT71 7JA  
Option 3: 02837549092

## BMW 1 Series 116d SE 5dr | Apr 2012



Breaking a wide range of cars with hundreds in stock For any queries on a part for this car or any other particular car give T-met a call on

ARMAGH - 028 3754 9092 option 3  
CAMPSIE - 028 7181 2727 option 2  
BELFAST - 028 9083 6252 option 3  
COLERAINE - 028 7035 1404

### Vehicle Features

'Lights On' warning buzzer, 2 cupholders, 4 grab handles, 12V power socket in centre console, 12V power socket in passenger footwell, 60/40 split rear seats, ABS/EBD, Automatic Stability Control (ASC), Auxiliary point for auxiliary devices, Black door sill finishers with BMW designation, BMW professional radio with CD player, Body colour bumpers, Body colour door handles, Body coloured door mirrors, Brake force display, CBC - (Cornering brake control), Child locks on rear doors, Chrome exhaust tailpipe, Chrome kidney grille with black vertical slats, Crash sensor, Diesel particulate filter, Drive Performance Control, Driver/Passenger airbags (Impact dependent), Driver/passenger sunvisors with ticket holders, Drivers knee airbag, DSC+, Dynamic brake control, Dynamic Traction Control - DTC, Electrically adjustable door mirrors, Electric front windows + one touch + anti-pinch, Electric rear windows, Electronic immobiliser, Engine start/stop button, Floor mats, Folding rear seat head rests, Follow me home headlights, Front/rear courtesy lights with soft on/off dimming, Front door storage bins, Front fog lights, Front folding/sliding centre armrest with storage, Front head restraints, Front isofix attachment + airbag deactivation, Front side airbags, Glovebox, Heated door mirrors, Heated windscreen washer jets, Hill start assist, Isofix rear child seat preparation, ITS head airbags for front/rear, Leather gear knob and handbrake grip, Load restraint lashing eyes, Luggage

<b>Fuel Type:</b>	Diesel
<b>Transmission:</b>	Manual
<b>Colour:</b>	Red
<b>Engine Size:</b>	1995
<b>Body Style:</b>	Hatchback
<b>Insurance group:</b>	15E
<b>Reg:</b>	VU12HRR

### Technical Specs

DIMENSIONS	
<b>Length:</b>	4324mm
<b>Width:</b>	1765mm
<b>Height:</b>	1421mm
<b>Seats:</b>	5
<b>Luggage Capacity (Seats Up):</b>	360L
<b>Gross Weight:</b>	1840KG
<b>Max. Loading Weight:</b>	530KG
PERFORMANCE & ECONOMY	
<b>Fuel Consum. (Urban Cold):</b>	52.3MPG
<b>Fuel Consum. (Extra Urban):</b>	72.4MPG
<b>Fuel Consum. (Combined):</b>	62.8MPG
<b>Fuel Tank Capacity:</b>	50L
<b>Number Of Gears:</b>	6 SPEED
<b>Top Speed:</b>	124MPH
<b>Acceleration 0-100 km/h:</b>	10.3s
<b>Engine Power BHP:</b>	114BHP

compartment lighting, Multifunction steering wheel with audio controls, Oil level indicator, On board computer, On board diagnostics, Outside temperature display, Pyrotechnically pretensioned front seatbelts, Reach + rake adjustable steering column, Rear wash/wipe, Remote central locking, Run flat indicator (RFI) - tyre puncture warning system, Seat belt force limiter, Service interval indicator, Storage compartments in front/rear door panels, Thatcham Cat.1 alarm, Three 3 point rear seatbelts, Tyre mobility system, Vanity mirrors, Warning triangle and first aid kit, Welcome lighting