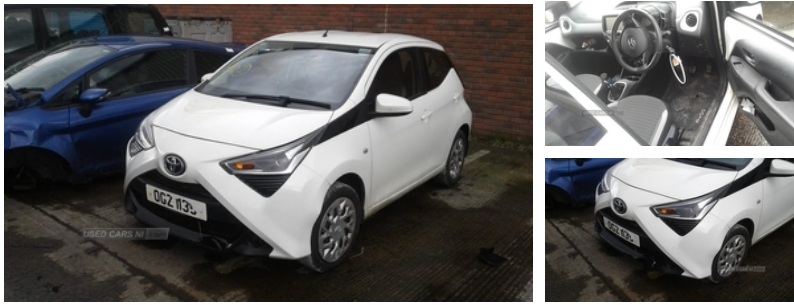


Toyota Aygo 1.0 VVT-i X-Play 5dr | Jun 2019



ENGINE AND GEAR BOX ARE PERFECT. WE HAVE OVER A THOUSAND CARS IN STOCK WITH A GOOD RANGE OF BOTH OLD AND FRESH VEHICLES. WE OFFER FREE DELIVERY ON ALL PARTS THROUGHOUT IRELAND. PLEASE CALL* ARMAGH 048 37 549092 OPTION 3*CAMPSIE 048 71812727*MALLUSK 048 90836252

Vehicle Features

2 speed wipers/variable intermittent/mist function, 3 spoke leather steering wheel, 4 speakers, 7" touch screen, 12V Accessory socket, 50/50 split folding rear seat, ABS, Air conditioning, Air recirculation system, Air vent surround in body colour, Auxiliary input socket, Bluetooth system, Body colour bumpers, Body colour door handles, Body colour door mirrors, Carbon rear diffuser, Centre console storage, Chrome insert to gearknob, Chrome interior door handles, Cloth upholstery, DAB Digital radio, Digital clock, Driver's seat height adjuster, Driver/passenger seat recline/slide adjust, Driver/passenger vanity mirrors with covers, Driver and passenger airbags, Driver and passenger sunvisors, Electric adjustable door mirrors, Electric front windows, Electric headlamp adjustment, Electric pack A - Transporter, Electric power steering, Emergency brake assist, Engine immobiliser, ESP, Fasten seatbelt reminder, Force limiting rear seatbelts, Front and rear door pockets, Front cupholder, Front map reading lights, Front side airbags, Fuel indicator with low level warning, Glovebox, Graphite cloth upholstery, Green tinted glass, Heated door mirrors, Heated rear windscreen, Height adjustable front seatbelts with pre-tensioners and load limiters, Hill start assist, iPod connection, Isofix system on outer rear seats, Leather gear knob, LED daytime running lights, LED rear lights, Lights on warning, Lockable fuel cap, Manually dimming rear view mirror, MP3 connection, Multimedia System, Passenger airbag deactivate switch, Pollen filter, Projector headlamps, Rear child proof door locks, Rear cupholders, Rear headrests, Rear spoiler, Rear view camera,

Fuel Type:	Petrol
Transmission:	Manual
Colour:	White
Engine Size:	998
Tax Band:	Petrol/Diesel (£190 p/a)
Body Style:	Hatchback
Insurance group:	7A
Reg:	OGZ1135

Technical Specs

DIMENSIONS	
Length:	3465mm
Width:	1615mm
Height:	1460mm
Seats:	4
Luggage Capacity (Seats Up):	168L
Gross Weight:	1240KG
Max. Loading Weight:	400KG

PERFORMANCE & ECONOMY	
Fuel Consum. (Urban Cold):	57.6MPG
Fuel Consum. (Extra Urban):	78.5MPG
Fuel Consum. (Combined):	68.9MPG
Fuel Tank Capacity:	35L
Number Of Gears:	5 SPEED
Top Speed:	99MPH
Acceleration 0-100 km/h:	13.8s
Engine Power BHP:	71.1BHP

Rear window demister, Rear wiper, Remote central locking, Roof mounted aerial, Side curtain airbags, Smartphone integration powered by pioneer compatible with Apple CarPlay and Android Auto, Space saver spare wheel, Speed limiter, Steering wheel mounted radio/phone controls, Stepless tilt adjustable steering column, Stereo radio, Storage bins on all doors, Storage pockets in centre console, Tachometer, Tonneau cover, Tyre pressure warning, USB connection, Vehicle Stability Control (VSC)