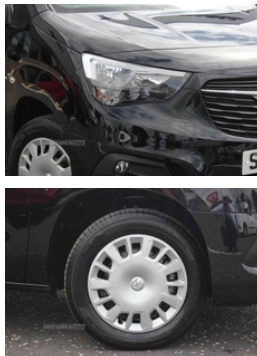




## Vauxhall Combo 2300 1.5 Turbo D 100ps H1 Pro Van | Apr 2023

3 YR WARRANTY!

**£17,990** + VAT



**REAR SENSORS + CAMERA / SPARE WHEEL / MULTIMEDIA NAVI PRO / 3 FRONT SEATS / PEARL BLACK METALLIC PAINT / FOG LIGHTS**

### Vehicle Features

2 folding keys with integral remote control function, 6 way adjustable height and reach drivers seats with manual lumbar adjustment and armrest, 12 volt electrical accessory socket centre console, 16" 5 spoke alloy wheels, Air conditioning, Aluminium to shift lever inlay, Anti-lock braking, Anti-roll bar, average and instantaneous fuel economy, average speed, Black door handles, Black door mirrors, Body colour front and rear bumpers, Cab heating system with six speed fan, Central locking activation switch on drivers door, Centrally located instrument cluster with service due indicator and trip computer data, Corner stability control, Daytime running lights, Deactivation switch for front passenger airbag and side impact airbag, Dipping rear view mirror, Door mirrors with power fold back, Driver's top lidded glovebox, Driver and front passenger sun visor and vanity mirror on rear of drivers sunvisor, Drivers and front passengers lap belt pretensioner system, Electronically protected audio, Electronic brake force distribution, Electronic cruise control with speed limiter, Electronic stability programme, Emergency brake assist, Energy absorbing steering column, Engine deadlock immobiliser, Engine drag torque control, Fabric upholstery, four adjustable facia vents, Front body lock diagonal seatbelt pretensioner system, Front seatbelt force limiters, fuel gauge with low fuel warning light and water temperature gauge warning light, Full width overhead storage shelf with ambient lighting, Gearshift

<b>Miles:</b>	1
<b>Fuel Type:</b>	Diesel
<b>Transmission:</b>	Manual
<b>Colour:</b>	Two Coat Metallic - Pearl Black
<b>Engine Size:</b>	1500
<b>Tax Band:</b>	Light goods vehicle (£335 p/a)
<b>Body Style:</b>	Van
<b>Reg:</b>	SXZ3278

### Technical Specs

<b>DIMENSIONS</b>	
<b>Length:</b>	4403mm
<b>Width:</b>	1848mm
<b>Height:</b>	1860mm
<b>Seats:</b>	3
<b>Luggage Capacity (Seats Up):</b>	Not AvailableL
<b>Gross Weight:</b>	2345KG
<b>PERFORMANCE &amp; ECONOMY</b>	
<b>Fuel Consum. (Urban Cold):</b>	45.6MPG
<b>Fuel Consum. (Extra Urban):</b>	62.8MPG
<b>Fuel Consum. (Combined):</b>	49.6MPG
<b>Fuel Tank Capacity:</b>	50L
<b>Number Of Gears:</b>	6 SPEED
<b>Top Speed:</b>	00102MPH
<b>Engine Power BHP:</b>	100.6BHP

indicator light, Hazard warning lights, heated door mirrors and power folding door mirrors, Height adjustable front seatbelts, Hill start assist, Illuminated controls, Independent MacPherson front suspension with gas pressure dampers and linear-rate coil springs, Instrumentation Speedometer, Large open storage pocket behind infotainment screen, Lights on audible warning, Magic wash system, Manual headlight beam levelling, Mistral grey fabric side bolsters, Multi-function trip computer with trip mileage, Multimedia nav pro pack - Cargo, Open storage compartment below glovebox, Reach and rake adjustable steering column, Rear fog lights, Rear torsion beam with gas pressure dampers and variable rate coil springs, Rear view camera, Reinforced passenger safety cell and front and rear deformation zones, Remote central locking and deadlocks, Remote control operates on doors and fuel filler or EV charging flap, Remote control ultrasonic security alarm system, rev counter, Reversing lights, Side impact protection beams, Side protection moulding, Sight and light pack with automatic lighting control - Combo, Six Fixed floor mounted load restraint lashing eyes, Small open storage compartment behind gear lever, Solar heat absorbing windscreen, Speed sensitive electric power assisted system, Steering wheel mounted audio controls, Three spoke flat bottomed design steering wheel with satin chrome effect bezel, Tinted windows, Traction control, Twin electrically adjustable, Two drinks holders in centre console, Two facia mounted drinks holders, Two large and two small open door pockets, Two speed windscreen wipers with variable intermittent wipe, vehicle range, Visible Vehicle Identification Number (VIN), windscreen demist vents and side window demist vents