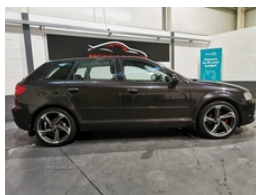


## Audi A3 1.6 TDI Sport 5dr | 2012

**\*\*\*FINANCE FROM 6. 9% APR\*\*\* TIMING BELT REPLACED\*\*\*  
NEW ALLOYS**

**£6,995**



2012 AUDI A3 1.6 TDI SPORT 5 SPEED MANUAL  
94345 MILES WITH FULL SERVICE HISTORY AND VOSA MILEAGE  
CHECK  
WILL BE SOLD WITH FULL YEARS MOT  
£20 TAX PER YEAR  
2 KEYS  
4 E/W E/M R/C/L O/B/C A/C M/F/S/W  
CD PLAYER  
CRUISE CONTROL  
BLUETOOTH  
BLACK CLOTH INTERIOR  
DAY TIME RUNNING LIGHTS  
REVERSE PARKING SENSORS  
FULLY SERVICED AND VALETED  
TIMING BELT AND WATER PUMP JUST REPLACED  
LOOKS AND DRIVES LIKE NEW  
MINT CONDITION

**\*\*\*NEW 19" ALLOYS OPTIONAL EXTRA\*\*\***

**\*\*\*CAN BE VIEWED IN A WELL LIT GARAGE FOR LATE NIGHT  
VIEWINGS\*\*\***

**\*\*\*LOW RATE FINANCE PACKAGES AVAILABLE AND CAN BE  
TAILORED TO YOUR NEEDS BY CHANGING DEPOSIT AMOUNTS  
AND PAYMENT TERMS\*\*\***

**\*\*\*DRIVE THIS CAR AWAY TODAY FROM ONLY £188.83 PER  
MONTH WITH ONLY A £1000 DEPOSIT AND PAY NOTHING FOR  
THE FIRST TWO MONTHS\*\*\***

<b>Miles:</b>	94345
<b>Fuel Type:</b>	Diesel
<b>Transmission:</b>	Manual
<b>Colour:</b>	Grey
<b>Engine Size:</b>	1598
<b>CO2 Emission:</b>	109
<b>Tax Band:</b>	B (£20 p/a)
<b>Body Style:</b>	Hatchback
<b>Insurance group:</b>	18E
<b>Reg:</b>	FR12GBO

## Technical Specs

DIMENSIONS	
<b>Length:</b>	4292mm
<b>Width:</b>	1765mm
<b>Height:</b>	1423mm
<b>Seats:</b>	5
<b>Luggage Capacity (Seats Up):</b>	370L
<b>Gross Weight:</b>	1880KG
<b>Max. Loading Weight:</b>	560KG

PERFORMANCE & ECONOMY	
<b>Fuel Consum. (Urban Cold):</b>	56.5MPG
<b>Fuel Consum. (Extra Urban):</b>	76.3MPG
<b>Fuel Consum. (Combined):</b>	68.9MPG
<b>Fuel Tank Capacity:</b>	55L
<b>Number Of Gears:</b>	5 SPEED
<b>Top Speed:</b>	121MPH
<b>Acceleration 0-100 km/h:</b>	11.7s
<b>Engine Power BHP:</b>	103.3BHP

\*\*\*3 MONTHS, 6 MONTHS, AND 1 YEAR WARRANTIES  
AVAILABLE\*\*\*

\*\*\*CREDIT AND DEBIT CARDS ACCEPTED\*\*\*

\*\*\*EXCELLENT FINANCE PACKAGES\*\*\*

£6,995

## Vehicle Features

3 adjustable rear headrests, 3 point seatbelts on all seats, 3 Spoke leather multi function steering wheel, 50/50 split folding rear seat, ABS/EBD, Active front headrests, Body colour door mirrors with integral indicators, Chrome fog light surround, Diesel particulate filter, Door sills with aluminium inlays, Driver's information system, Driver/Front Passenger airbags, Driver and passenger side airbags, Dual zone electronic climate control, EDL, Electric operated/heated door mirrors, ESP with ASR, Front and rear electric windows, Front centre armrest, Front fog lights, Front sports seats, Heated rear window with time switch, Heat insulating glass, Height/depth adjustable steering column, Height adjustable front seats, ISOFIX child seat preparation+airbag deactivation, Locking wheel bolts, Rear window sun screen in parcel shelf, Rear wiper, Remote control central locking, Service interval indicator, Servotronic speed related PAS, Sports suspension, Thatcham category 1 alarm + immobiliser, Tyre mobility system, Warning triangle