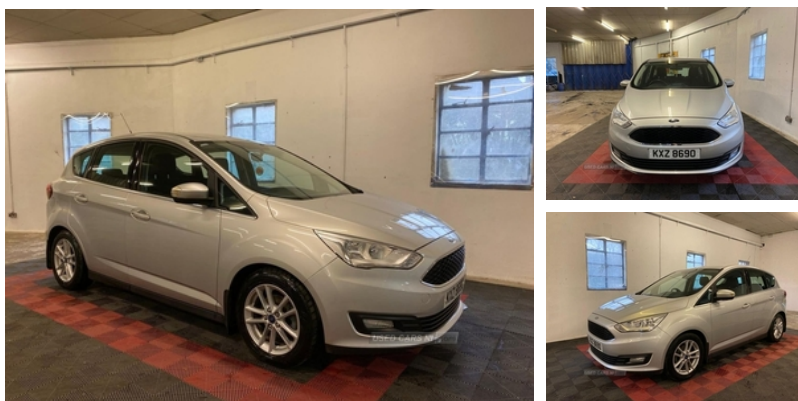


Ford C-max 1.5 TDCi Zetec 5dr | Jul 2017

**** ONLY 1 PREVIOUS OWNER ****

£9,495



12 Months MOT Included 1.5 Diesel Only 32000 Miles Service History Auto Start Stop Air Conditioning Steering Wheel Controls DAB Radio CD Player USB Audio Inputs Bluetooth Handsfree Front Fog Lights Alloy wheels Manual Handbrake 6 Speed Gearbox Rear ISOFIX Anchor Points Electric Windows Spare Wheel Kit Walkaround Video: Contact Nathan 07809252911 Located in Dollingstown Can deliver anywhere in UK To see what else we have click : Mjscarsltd.com

Vehicle Features

3x3 point rear seatbelts, 12V accessory sockets - front and rear, 16" 5x2 spoke alloy wheels, 16in Alloy Wheels - 5x2 Spoke, 16in Alloy Wheels - 5x2 Spoke, ABS + traction control, Accessory Power Socket - 12V, Airbags - Driver and Front Passenger, Airbags - Front and 2nd Row Curtain, Airbags - Front Side Impact, Air conditioning, Air Conditioning - Manual, Alarm - Thatcham Category 1 with Volume Sensing and Perimeter, Anti-Lock Braking System - Anti-lock Braking System with Electronic Brake Force Distribution - EBD, Anti-theft immobiliser, Auxiliary power socket, Body colour bumpers with black rubbing strip, Body colour door handles, Body colour door mirrors with integral indicators, Bright Finish on Upper Door Line, Bright Finish on Upper Door Line, Centre armrest with storage box, Centre Console with Armrest, Chrome beltline, Chrome finish on upper door line, Cloth upholstery, Courtesy Light - Front and Rear Passengers - Overhead Halogen and Load Compartment, Courtesy light in luggage compartment, DAB radio/CD player, Diesel particulate filter, Door Handles - Body Colour, Door Mirrors - Body Colour Housings - Heated - Electrically Operated and Integrated Side Indicators, Driver's information system, Driver's seat manual height adjust, Driver and passenger airbags, Driver

Miles:	31000
Fuel Type:	DIESEL
Transmission:	Manual
Colour:	Silver
Engine Size:	1499
CO2 Emission:	105
Tax Band:	Petrol/Diesel (£190 p/a)
Body Style:	MPV
Insurance group:	17E
Reg:	KXZ8690

Technical Specs

DIMENSIONS

Length:	4379mm
Width:	1828mm
Height:	1610mm
Seats:	5
Luggage Capacity (Seats Up):	432L
Gross Weight:	1915KG
Max. Loading Weight:	587KG

PERFORMANCE & ECONOMY

Fuel Consum. (Urban Cold):	60.1MPG
Fuel Consum. (Extra Urban):	76.4MPG
Fuel Consum. (Combined):	68.9MPG
Fuel Tank Capacity:	53L
Number Of Gears:	6 SPEED
Top Speed:	114MPH
Acceleration 0-100 km/h:	11.3s
Engine Power BHP:	118BHP

and passenger side airbags, Driver seat lumbar adjustment, Easy fuel capless refuelling system, Electric front windows + drivers one touch, Electric heated door mirrors, Electric power steering, Electronic brake force distribution, Emergency brake assist, Emergency Brake Warning - Automatic Hazard Warning Lights, Enhanced Electronic Stability Control - ESC with Traction Control - Emergency Brake Assist - EBA - Hill Start Assist - HSA, EPAS - Electric Power Assisted Steering, ESP, Fasten seatbelt reminder, Ford DAB Audio System with SYNC, Ford Easy-Fuel Capless Refuelling System, Ford Eco Mode - Driver Information System, Ford SYNC Bluetooth connection with voice control and USB port, Front/rear courtesy lights, Front and rear curtain airbags, Front floor mats, Front fog lamps, Front Fog Lights, Front Seat - Drivers Manual Height and F, Front Seat - Drivers Manual Height and Fore-Aft Adjustment, Front Seat - Drivers Manual Lumbar Support Adjustment, Front Seat - Passenger Manual Fore-Aft Adjustment, Front Seats - Height Adjustable Head Restraints, Front Seats - Sports Style, Front Suspension - Independent with MacPherson Struts and Anti-Roll Bar, Fully adjustable front headrests, Gearshift Knob - Leather, Glovebox - Illuminated, Height adjustable front seatbelts, Hill start assist, Intelligent Protection System (IPS), Interior Door Lever - Satin Chrome Finish, Intermittent rear wash/wipe, IPS - Intelligent Protection System, ISOFIX - Child Seat Attachments, Isofix child seat attachment, Leather gearknob, Locking wheel nuts, Mini Spare Wheel, Mini steel spare wheel, Moondust Silver, Moondust Silver, Multi function display colour screen, MyKey, MyKey, MyKey system, Premium centre console, Quickclear Heated Front Windscreen with Heated Washer Jets, Quickclear heated windscreen, Rake/reach adjustable steering wheel, Rear parcel shelf, Rear Seats - Three 2nd Row Individual Fold Flat Seats with Height Adjustable Head Restraints, Rear Suspension - Independent Control Blade Multi-Link System and Anti-Roll Bar, Remote Central-Double Locking, Remote central double locking, Satin black trim, Satin chrome interior door handles, Sports style front seats, Steering Column - Rake and Reach Adjustment, Steering Wheel - 3 Spoke - Leather Trimmed, Steering wheel mounted audio controls, SYNC Emergency Assistance, Thatcham 1 volume sensing alarm, Three height adjustable rear head restraints, Trip computer, Tyre pressure monitoring system, Versatile split folding rear seat - 40/20/40, Windows - Electrically Operated Front with One Touch Lowering-Closing on Drivers Side, Wipers - Standard with 6 Speed Interval Settings