

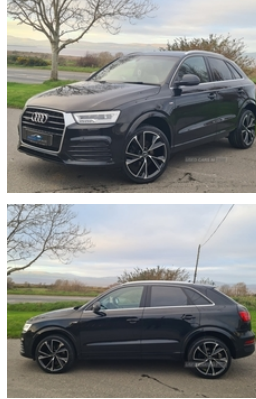


BT49 9JE 319 Clooney Road Ballykelly, Limaady, County Londonderry/Derry Contact us on 078 9404 2874
Finance Available With Nil Deposits For All Ages., Limavady, BT49 9JE
Sean: 078 9404 2874 | Niall: 079 2877 1030

Audi Q3 2.0 TDI S Line Navigation 5dr | 2016

£ 35 PER YEAR TAX / NEW TIMING BELT & WATERPUMP

£13,945



£35 / YEAR TAX,
NEW TIMING BELT & WATERPUMP,
SAT NAV,
D.A.B RADIO,
BLUETOOTH,
ELECTRIC BOOT,
PARKING SENSORS

Vehicle Features

3x3 point rear seatbelts, 6.5" colour display screen, 12V socket in rear centre console, ABS+Electronic Brake force Distribution, Acoustic windscreen, Aluminium door sill trims, Aluminium window surround, Audi drive select, Audi music interface, Black cloth headlining, Body colour door mirrors, Body coloured bumpers, Chrome exhaust tailpipe, Chrome fog light surround, Chrome grille, Coming home function, Curtain airbags, DAB digital radio module, Diesel particulate filter, Door mirror integrated indicators, Driver and passenger airbags, Driver and passenger side airbags, Dual zone climate control, EDL + ASR, Electrically operated child locks on rear doors, Electric front lumbar adjustment, Electromechanical parking brake, ESP, First aid kit, Front and rear electric windows, Front and rear headrests, Front and rear velour floor mats, Front centre armrest with storage compartment and angle adjustment, Front fog lights, Front passenger airbag deactivation, Front sports seats, Heated windscreen washer jets, Height/reach adjust steering wheel, ISOFIX on front passenger and rear outer seats, Jack and

Miles:	61000
Fuel Type:	Diesel
Transmission:	Manual
Colour:	Black
Engine Size:	1968
CO2 Emission:	119
Tax Band:	C (£35 p/a)
Body Style:	Sport utility vehicle
Insurance group:	22E
Reg:	KP66FRK

Technical Specs

DIMENSIONS

Length:	4388mm
Width:	1831mm
Height:	Not Availablemm
Seats:	5
Luggage Capacity (Seats Up):	420L
Gross Weight:	2085KG
Max. Loading Weight:	600KG

PERFORMANCE & ECONOMY

Fuel Consum. (Urban Cold):	55.4MPG
Fuel Consum. (Extra Urban):	67.3MPG
Fuel Consum. (Combined):	61.4MPG
Fuel Tank Capacity:	64L
Number Of Gears:	6 SPEED

USED CARS NI

Used Cars NI can take no responsibility for any errors which may appear in listings. Please confirm details with the seller when making an enquiry.

tool kit, LED daytime running lights, LED headlights with headlight washers, LED rear lights, Light and rain sensor for auto activation of lights and windscreen wipers, Loading sill protector in stainless steel, Locking wheel bolts, Low washer fluid indicator, Matt brushed aluminium fascia and door trim inlays, MMI - Multi Media Interface control system, On board computer, PAS, Rear wiper, Remote central locking, Remote electric boot opening/closing, Retractable luggage cover, Seatbelt warning light, Service interval indicator, S Line body styling, Split fold rear seat, Sunband for windscreen, Thatcham category 1 alarm + immobiliser, Towbar preparation, Tyre pressure monitoring system, Under floor storage in luggage area, Voice control system, Warning triangle

Top Speed:	126MPH
Acceleration 0-100 km/h:	9.6s
Engine Power BHP:	147.5BHP