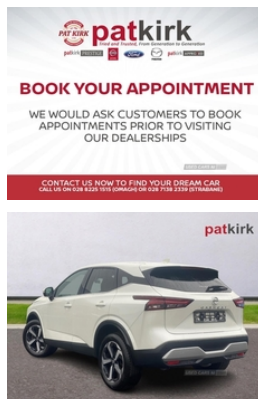


Nissan Qashqai 1.3 DiG-T MH N-Connecta 5dr | 2022

£21,995



Miles:	9468
Fuel Type:	PETROL/MHEV
Transmission:	Manual
Colour:	White
Engine Size:	1332
Body Style:	Sport utility vehicle
Insurance group:	12E
Reg:	VK22BJU

Vehicle Features

2 on side, 2 on side, 2 way electrical driver lumbar adjustment, 2x Rear coat hooks, 3 bench rear seats in 2nd row, 3 rear headrests, 3D maps and Google street view, 3D maps and Google street view, 3rd brake light, 3x3 point rear seatbelt pretensioners + load limiters, 4 folding assist grip, 6 Luggage hooks - 4 on floor, 6 Luggage hooks - 4 on floor, 6 speakers, 6-way manually adjustable driver's seat, 7" High definition full colour TFT screen combimeter, 12v power socket in dashboard and luggage, 18" diamond cut alloy wheels, 60/40 split folding rear seat bench, ABS, Active brake limited slip, AM/FM audio system with DAB, Ambient lighting around centre console, Anti-lock Braking System, Auto dimming rear view mirror, Auto hold function, Auto rear wiper when reversing, Blind spot warning, Bluetooth audio streaming, Body coloured door handles, Body colour mirror caps, Bodyside mouldings, Capless fuel filler, Centre console storage tray, Child locks on rear doors, Chrome interior door handles, Chrome side window finisher, Cloth monoform upholstery, Curtain and front side, Curtain and front side, cyclist recognition and junction assist, cyclist recognition and junction assist, Door handle with button, Drive modes (sport, Drive modes (sport, Driver, Driver, Driver and front passenger sunvisors with illuminated vanity mirrors, Driver and passenger airbags, Driver seat back pocket, Dual zone automatic climate control with pollen filter, Dusk sensor, EBD and brake assist, EBD and brake assist, eco, eco), Electrically adjustable and heated door mirrors with LED turn indicator, Electric auto folding door mirrors, Electric speed sensitive power steering, Electronic parking brake, Emergency and breakdown call, Engine immobiliser, ESP, ESP, far side airbags, far side airbags, Follow

Technical Specs

DIMENSIONS

Length:	4425mm
Width:	1835mm
Height:	1625mm
Seats:	5
Luggage Capacity (Seats Up):	479L
Gross Weight:	1935KG
Max. Loading Weight:	562KG

PERFORMANCE & ECONOMY

Fuel Consum. (Combined):	44.1MPG
Fuel Tank Capacity:	55L
Number Of Gears:	6 SPEED
Top Speed:	122MPH
Acceleration 0-100 km/h:	10.2s
Engine Power BHP:	138.1BHP

me home headlights, Front and rear door storage, Front and rear parking sensors, Front cupholders x 2, Front door with bottle holders, Front seatbelt pretensioners + load limiters, Front USB connections (Type-A and Type-C), Glovebox with light, Google maps services - search, Google maps services - search, Hard trunk cover, Height adjustable front headrests, Height adjustable front seatbelts, High beam assist, Hill start assist, horn and car locator, horn and car locator, Idle stop/start system, Intelligent around view monitor, Intelligent auto headlights, Intelligent blind spot intervention, Intelligent Cruise control (ICC), Intelligent driver alert system, Intelligent forward collision warning, Intelligent front emergency braking with pedestrian, Intelligent front emergency braking with pedestrian, Intelligent lane intervention, Intelligent rear automatic braking, Lane departure prevention, Lane departure warning system, Leather shift knob, Leather steering wheel, LED daytime running lights, LED Headlights, LED rear lights, lights, lights, Luggage board system, Luggage space lighting, Manually adjustable passenger (slide recline + lifter), Maximum speed limiter, Moving object detection, Multifunction steering wheel, Nissan connect 9" touchscreen infotainment system, Nissan connect navigation, Nissan i-key, normal, normal, One touch front and rear electric windows with remote opening and closing, Partially body coloured bumpers, passenger and 2nd row rear seat belt reminder, passenger and rear seat belt reminder, Passenger seat back pocket, Privacy glass, Push button starter, PVC front centre console and armrest, Rear armrest with 2 cupholders, Rear bumper with silver insert, Rear cross traffic alert, Rear door bottle holders, Rear reversing light (bulb lighting), Rear roof spoiler, Rear side wing doors, Rear styling plate, Rear USB charging only ports (Type-A and Type-C), Remote central door locking with deadlocking, Remote control services - door locks, Remote control services - door locks, Shark fin antenna, Single front passenger seat, snow), Soft PVC kneepad, Splash free rain sensing wipers, Steering wheel switches, Sunglasses holder, Super UV and infrared cut glass, Telematics - notifications and connectivity services, Thatcham Cat.1 alarm, Three blink turn signal, Tilt/telescopic adjustable steering wheel, Tilt/telescopic adjust steering wheel, TomTom live traffic services, Traffic sign recognition with legal speed adjustment, Trip computer, Two rear isofix child seat anchorage points with top tether, Tyre pressure monitoring system, Vehicle dynamic control, Virtual personal assistant and firmware over the air capability, weather, weather, Welcome light and console tray ambient lighting, Wireless Apple CarPlay and wired Android Auto