



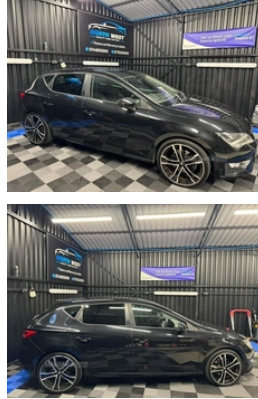
Yard 4 Knockroe Business Park, Strabane, BT82 9QR  
Martin: +447725163525 | Shaun: +447448005800

## Seat Leon 2.0 TDI 184 FR 5dr [Technology Pack] | Oct 2014

MINT FR LEON NEW WHEELS INCLUDED FINANCE AVAILABLE

**£7,250**

**£7850**



Seat Leon 2.0tdi FR Technology

own this Leon FR for as little as £36 per week. To apply for a personal finance quote click link below. Just follow these 3 simple steps

1. Go to our showroom
2. Click on vehicle you are interested in
3. Go to apply now

2014

October 24

98k motorway miles

Manual

DAB

Sat Nav

Privacy Glass

Parking sensors

Air con

19" Alloys 4 New tyres

Timing belt done

Service history

Mint condition inside and out

Car will come

Fully Serviced

Fully valeted

Full health check

All paperwork completed by us

<b>Miles:</b>	98512
<b>Fuel Type:</b>	Diesel
<b>Transmission:</b>	Manual
<b>Colour:</b>	Black
<b>Engine Size:</b>	1968
<b>CO2 Emission:</b>	109
<b>Tax Band:</b>	B (£20 p/a)
<b>Body Style:</b>	Hatchback
<b>Insurance group:</b>	27E
<b>Reg:</b>	KY64AEZ

## Technical Specs

### DIMENSIONS

<b>Length:</b>	4271mm
<b>Width:</b>	1816mm
<b>Height:</b>	1444mm
<b>Seats:</b>	5
<b>Luggage Capacity (Seats Up):</b>	380L
<b>Gross Weight:</b>	1850KG
<b>Max. Loading Weight:</b>	480KG

### PERFORMANCE & ECONOMY

<b>Fuel Consum. (Urban Cold):</b>	54.3MPG
<b>Fuel Consum. (Extra Urban):</b>	74.3MPG
<b>Fuel Consum. (Combined):</b>	67.3MPG
<b>Fuel Tank Capacity:</b>	50L
<b>Number Of Gears:</b>	6 SPEED
<b>Top Speed:</b>	142MPH
<b>Acceleration 0-100 km/h:</b>	7.5s
<b>Engine Power BHP:</b>	181BHP

3 months warranty with extended warranty options available  
Excellent exchange rate on euro  
All Major credit/Debit cards  
Delivery can be arranged Nationwide

Yard 4  
knockroe business park  
strabane  
BT82 9QR

Shaun 07448005800  
Martin 07725163525

£7250

## Vehicle Features

'Lights On' warning buzzer, 3 height adjustable rear headrests, 3 point rear seatbelts x3, 12v power point in centre console, ABS + traction control, Active head restraints, Additional heating and ventilation outlet in rear of centre console, Aluminium front door sills, Ambient lighting, Auxiliary input socket, Bluetooth audio streaming, Bluetooth Handsfree Phone Connection, Body colour door handles, Body coloured bumpers, Child proof door locks, Chromed centre radiator grille surround, Chrome interior trim, Coming home headlight function, Curtain airbags, DAB Digital radio, Dark tinted rear windows, Digital clock and outside temperature display, Driver/Front Passenger airbags, Driver/passenger sunvisors with illuminated vanity mirrors, Driver seat height/lumbar adjust, Drivers knee airbag, Dual zone climate control, Dust/pollen filter, Electric adjustable/heated/folding door mirrors, Electric front/rear windows with one touch/anti pinch, Electric headlamp adjustment, Engine immobiliser, ESP+EBA, Front/rear floor mats, Front adjustable head restraints, Front and rear parking sensors, Front armrest with storage box, Front cupholders x 2, Front map reading lights, Front seatback pockets, Front seatbelt pretensioners, Front side airbags, Full LED headlight pack - Leon, Height/reach adjust steering wheel, Hill hold control, Illuminated boot, Illuminated glovebox, Leather handbrake, LED indicators in door mirrors, Locking wheel bolts, Low fuel warning light, Luggage tie-down hooks, Multi function display, Passenger airbag deactivation system, Passenger seat height adjuster, Passenger seat lumbar adjust, Perforated leather steering wheel with red stitching + gear knob, Radio/CD + MP3, Rear reading lights, Rear top tether child seat ISOFIX attachment, Rear wash/wipe, Remote central locking + deadlocks, Remote fuel flap release, Reverse activated kerb-view adjustment on passenger's door mirror, SD card slot, Seatbelt warning, SEAT

Drive profile, SEAT logo boot release, Seat navigation pack - Leon FR/Cupra, Second remote key, Service interval indicator, Split folding rear seat, Sports suspension, Steering wheel mounted audio/phone controls, Tinted windows, Touch screen display, Trip computer, Tyre pressure monitoring system, USB port, Volumetric alarm with back up horn, XDS electronic differential lock