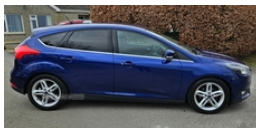


Ford Focus 1.5 TDCi 120 Zetec 5dr | Sep 2015

SOLD WITH FULL YEARS MOT

£6,750



Own this car from £38 per week

Sold with 3 months comprehensive warranty

2015 Ford Focus 1.5 TDCi Zetec

1.5 Diesel

98000 miles

6 Speed manual

2x Keys

Sold with full years MOT

£6750

From £152 per month with £750 deposit over 60 months

Contact us today for a quote

Viewing by appointment only

Trade in welcome

07731740034

Vehicle Features

'Quickclear' heated windscreen/heated washer jets, 3 spoke leather steering wheel, 8" colour touch screen, 60/40 split back

Miles:	98000
Fuel Type:	Diesel
Transmission:	Manual
Colour:	Blue
Engine Size:	1499
CO2 Emission:	98
Tax Band:	A (£0 p/a)
Body Style:	Hatchback
Insurance group:	16E
Reg:	FG65PUY

Technical Specs

DIMENSIONS

Length:	4358mm
Width:	1823mm
Height:	1484mm
Seats:	5
Luggage Capacity (Seats Up):	316L
Gross Weight:	1900KG
Max. Loading Weight:	632KG

PERFORMANCE & ECONOMY

Fuel Consum. (Urban Cold):	65.7MPG
Fuel Consum. (Extra Urban):	83.1MPG
Fuel Consum. (Combined):	74.3MPG
Fuel Tank Capacity:	53L
Number Of Gears:	6 SPEED
Top Speed:	120MPH
Acceleration 0-100 km/h:	10.5s
Engine Power BHP:	118BHP

and cushion rear seats with 2 height adjustable headrests, ABS+Electronic Brake force Distribution, advanced voice control, Air conditioning - CFC-free, Aux input, Bluetooth connection, Body colour bumpers, Body colour door handles, Body colour door mirrors, Body colour rear spoiler, Centre console storage box/armrest, Chrome finish on upper door line, Chrome radiator grille and surround, Cloth upholstery, Diesel particulate filter, Digital clock, Driver's seat manual height adjust, Driver's seat with adjustable lumbar support, Driver airbag, Easy fuel capless refuelling system, Eco mode, Electric adjustable heated door mirrors, Electric boot release, emergency assistance, ESP with traction control + emergency brake assist, Front floor mats, Front fog lights, Front inertia reel height adjustable seatbelts with pre-tensioners, Front passenger airbag, Front side airbags, Front variable intermittent wipers with electric wash, Heated rear window, Height adjustable front headrests, Hill start assist, Immobiliser-Passive Anti-Theft System (PATS), Isofix child seat preparation, MyKey system, PAS, Reach + rake adjustable steering column, Remote central double locking, Side curtain airbags, Sports style front seats, Steering column with mounted audio controls, SYNC 2 DAB radio/CD, Tailgate wash/wipe, TFT cluster screen, Thatcham Cat.1 alarm, Three rear inertia reel lap/diagonal seatbelts, Trip computer, Tyre pressure monitoring system, USB connection