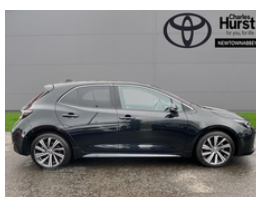


## Toyota Corolla 1.8 Vvt-I Hybrid Design 5Dr Cvt | Oct 2022

£ 500 OFF ADVERTISED PRICE

# £20,799



Brilliant Corolla Design Hybrid available at Toyota Newtownabbey. Stunning looks and a better drive. Why not take a look and come visit

### Vehicle Features

3 rear headrests, 3 seat bench in 2nd row, 3 spoke leather steering wheel + gear knob, 3x3 point rear seatbelts, 6 speakers, 7" Multi information display screen, 8" Touchscreen with MM19 Multimedia system and voice recognition, 60/40 split folding rear seat, Acoustic vehicle alert system (AVAS), Adaptive cruise control, Adjustable driver and front passenger seat belt extender to top anchor point, Adjustable speed limiter switch on steering wheel, Air Conditioning, Alarm with motion sensor and immobilizer, Alloy Wheels, AM/FM radio, Anti-jam protection on power windows, Anti-lock Braking System, Anti lock braking system + Electronic brake force distribution, Audio, Auto dimming inside rear view mirror, Automatic folding mirrors, Automatic headlights with high beam assist, Auto up and down function on all power windows, Black metallic surround on lower front grille, Black toyota logo in front, Black window frames, Blue ambient interior illumination to centre tray, Bluetooth Music Streaming, Bluetooth telephone connectivity, Body coloured bumpers, Body coloured door mirrors, Body coloured outside door handles, Body colour rear spoiler, Boot light, Brake assist function, Centre room light, Child locks on rear doors, Clean air filter, Climate Control, Collision Detection, Connected car functionality upgrade, Cruise Control, DAB Digital radio, Door trim and centre console material, Downhill Assist Control (DAC), Driver and front passenger personal light, Driver and passenger

<b>Miles:</b>	6198
<b>Fuel Type:</b>	Hybrid
<b>Transmission:</b>	Automatic
<b>Colour:</b>	Black
<b>Engine Size:</b>	1798
<b>Body Style:</b>	Hatchback
<b>Insurance group:</b>	15E
<b>Reg:</b>	FG72XDD

### Technical Specs

<b>DIMENSIONS</b>	
<b>Length:</b>	4370mm
<b>Width:</b>	1790mm
<b>Height:</b>	1435mm
<b>Seats:</b>	5
<b>Luggage Capacity (Seats Up):</b>	313L
<b>Gross Weight:</b>	1820KG
<b>Max. Loading Weight:</b>	525KG

<b>PERFORMANCE &amp; ECONOMY</b>	
<b>Fuel Consum. (Urban Cold):</b>	80.7MPG
<b>Fuel Consum. (Extra Urban):</b>	74.3MPG
<b>Fuel Consum. (Combined):</b>	78.5MPG
<b>Fuel Tank Capacity:</b>	43L
<b>Number Of Gears:</b>	1 SPEED
<b>Top Speed:</b>	112MPH
<b>Acceleration 0-100 km/h:</b>	10.9s
<b>Engine Power BHP:</b>	120.7BHP

assist grip, Driver and passenger sun visor with mirror and light, dual side curtain, Dual zone automatic air conditioning with ECO mode switch, Dynamic radar cruise control (with RSA) switch on steering wheel, E-call, Electrically assisted power steering, Electronic parking brake, Emergency brake light signal (EBS), EV drive indicator, Fabric/synthetic leather upholstery, Follow me home headlights, Front & Rear Parking Sensors, Front and rear cup and bottle holders, front cup holders and front door trim, Front door pockets, Front Fog Lamps, Front head restraints, Front passenger airbag on/off switch, Front passenger seat, Front seatbelt reminder, Gasoline particulate filter, HAC-Hill-start Assist Control, Heated driver and front passenger seats, Heated Seats, Heated Windscreen, Illuminated entry system in room lamp, Intelligent park assist, Isofix Mounting Points, ISOFIX seat fixing (2 fixings on rear outer seats), Keyless Start, Lane Departure Alert (LDA) switch on steering wheel, Lane Departure Warning System, Leather gear shift with satin chrome on gear shift console, Leather style armrests, LED daytime running lights, LED front fog lights, LED Headlights, LED High mounted stop light, LED rear combi lights with LED lightguide, Manual height adjustable for driver and front passenger seat, Memory on adjustable speed limiter, multimedia and telephone switches on steering wheel, Parcel shelf, Parking pack - Corolla, Passenger seat back pocket, Pollen filter, Power adjustable heated door mirrors, Power adjustable lumbar support on driver seat, Power front windows, Power rear windows, Power Steering, Power window switches with satin chrome inserts, Privacy glass, Push button start, Rain sensing wipers, Rain sensor wipers, Rear-facing Camera, Rear armrest with 2 cupholders, Rear passenger coat hooks (2), Rear seat belt reminder, Rear side wing doors, Rear window defogger, Rear window wiper, Remote central locking + deadlocks, remote status and e-care, Reverse tilting door mirrors, Reversing camera, Satellite Navigation, Satin chrome dash trim, Satin chrome inside door handles, Seatbelt pretensioners and force limiters, Shark fin antenna, Shopping bag hooks in luggage compartment, side impact and driver knee airbags, Sliding armrest on centre console box, Slow opening glovebox with lights, Smart entry, Smartphone integration with Apple CarPlay and Android auto, Soft touch texture on upper dashboard, Supplemental restraint system (SRS) 7 airbags - dual driver, Tilt/telescopic steering column, Time adjustment on intermittent wiper, Tinted Glass, Touch screen display, Toyota safety sense 2 pack - Corolla, Toyota touch 2 with go navigation system, tracker, Traction control, Turning signal integrated indicators in door mirrors, Tyre pressure warning system, Unique lower skirt, Unique side rocker with black insert, Unique wheel finish with red wheel cap, USB and Aux in connectors + 12V front outlet, USB Connection, UV-filter on driver and passenger

windows, Vehicle Stability Control (VSC), Voice recognition  
switch on steering wheel, WIL - Whiplash Injury Lessening seats