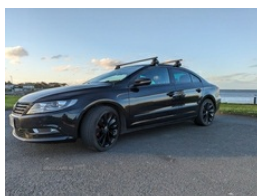


## Volkswagen CC 2.0 TDI BlueMotion Tech GT 4dr DSG | Sep 2014

MOT 30TH APRIL 2025

**£4,950** O.N.O



Includes:

- Two tone leather seats
- Heated driver and passenger seats
- Satnav and DAB radio
- Towbar WITH 8 pin socket
- Thule roof bars
- Full-size spare wheel
- Hydraulic jack
- Aftermarket amplifier and speakers (JBL and JL audio)
- Rear armrest and cup holders
- Front and rear 12V sockets
- Electric seats with lumbar support
- Two keys

### Vehicle Features

2 boot load lashing points, 2 Zone electronic climate control with automatic air recirculation, 3 rear head restraints, 3 spoke leather steering wheel + gear knob, 3x3 point rear seatbelts, 4 way adjustable front head restraints, 60/40 split folding rear seat, ABS+EBD+Brake assist, Alarm with interior protection, Analogue clock, Auto dimming rear view mirror, Automatic coming/leaving home lighting function, Automatic headlights, Bluetooth Telephone preparation, Body colour bumpers, Body

<b>Miles:</b>	129400
<b>Fuel Type:</b>	Diesel
<b>Transmission:</b>	Automatic
<b>Colour:</b>	Black
<b>Engine Size:</b>	1968
<b>CO2 Emission:</b>	131
<b>Tax Band:</b>	E (£190 p/a)
<b>Body Style:</b>	Coupe
<b>Reg:</b>	Mf64uht

### Technical Specs

DIMENSIONS	
<b>Length:</b>	4802mm
<b>Width:</b>	1855mm
<b>Height:</b>	1421mm
<b>Seats:</b>	5
<b>Luggage Capacity (Seats Up):</b>	532L
<b>Gross Weight:</b>	1990KG
<b>Max. Loading Weight:</b>	426KG
PERFORMANCE & ECONOMY	
<b>Fuel Consum. (Urban Cold):</b>	47.9MPG
<b>Fuel Consum. (Extra Urban):</b>	64.2MPG
<b>Fuel Consum. (Combined):</b>	56.5MPG
<b>Fuel Tank Capacity:</b>	70L
<b>Number Of Gears:</b>	6 SPEED
<b>Top Speed:</b>	132MPH
<b>Acceleration 0-100 km/h:</b>	9.8s
<b>Engine Power BHP:</b>	138.1BHP

colour door handles, Body colour door mirrors with integral indicators, Body coloured bumper strips, Chrome plated side bump strips and rear strip, Chrome side window surrounds, Chrome trimmed radiator grille, cooled glovebox, Curtain airbags, Diesel particulate filter, Door/boot open warning light, Door open warning reflectors, Door side impact protection, Driver/Front Passenger airbags, Driver alert system, Electrically adjustable and heated door mirrors, Electronic engine immobiliser, Electronic parking brake with auto hold, ESP with EDL + ASR, Front + rear carpet mats, Front and rear electric windows, Front and rear interior lighting with delay and dimming function, Front centre armrest with storage compartment, Front cupholders x 2, Front fog lights, Front passenger airbag deactivation, Front seatback pockets, Front side airbags, Front sport seats, Full size alloy spare wheel, Green tinted heat insulating glass, Heated front seats, Heated rear window, Heat insulated tinted glass from B pillar back, Height/reach adjust steering wheel, Height adjustable front 3 point seatbelts + pretensioners, illuminated, Isofix on 2nd row outer seats, Load through provision, Lockable, Low washer fluid warning light, Multi-function steering wheel, Multifunction computer - Highline, Multi function display colour screen, Press and drive key, Rain sensor, Rear armrest with 2 cupholders, Remote central locking, Remote fuel flap release, Remote tailgate release, Service interval indicator, Speed sensitive power steering, Sports suspension, Stainless steel door sills, Storage compartment in driver's door, Storage compartment in passenger's door, Storage compartment in roof console, Storage tray + 12V socket in centre console, Sunvisors with illuminated vanity mirrors, Tyre pressure warning, Warning buzzer and light for front seatbelts unfastened, Warning triangle