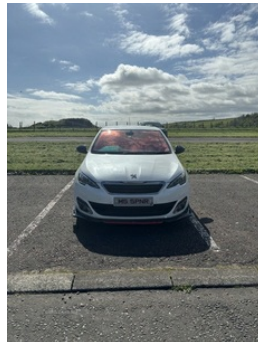


27 knockdhu park, Larne, BT40 2EJ  
07979082157

## Peugeot 308 2.0 BlueHDi 150 GT Line 5dr | Jun 2016

### TOP SPEC FULL SERVICE HISTORY



2.0 HDI 150

Full service history including timing belt

Top spec including reverse camera sports seats and suspension

MOT September 24

Private reg not included

Well maintained and clean example

Any questions phone or text

Serious buyers only

£4850 ovno

### Vehicle Features

3x3 point rear seatbelts, 12V accessory power point in centre console, 18" Diamant alloy wheels, 60/40 split folding rear seat back and squab, ABS/EBFD/EBA, Adjustable front centre armrest, Aluminium effect door sills, Aluminium pedals, Automatic front rain sensing wipers, Automatic headlights, Black rear diffuser, Body coloured bumpers, Colour coded door handles, Colour satellite navigation, DAB Digital radio, Dark tinted rear windows, Deadlocks, Driver SMART airbag, Dual zone automatic air conditioning, Electric adjustable door mirrors, Electric folding door mirrors with courtesy approach lighting, Electric front windows/one touch facility, Electric rear windows, Electrochrome

# £4,850

<b>Miles:</b>	145792
<b>Fuel Type:</b>	Diesel
<b>Transmission:</b>	Manual
<b>Colour:</b>	White
<b>Engine Size:</b>	1997
<b>CO2 Emission:</b>	102
<b>Tax Band:</b>	B (£20 p/a)
<b>Body Style:</b>	Hatchback
<b>Reg:</b>	M55 pnr

### Technical Specs

DIMENSIONS	
<b>Length:</b>	4253mm
<b>Width:</b>	1804mm
<b>Height:</b>	1457mm
<b>Seats:</b>	5
<b>Luggage Capacity (Seats Up):</b>	501L
<b>Gross Weight:</b>	1870KG
<b>Max. Loading Weight:</b>	580KG
PERFORMANCE & ECONOMY	
<b>Fuel Consum. (Urban Cold):</b>	61.4MPG
<b>Fuel Consum. (Extra Urban):</b>	80.7MPG
<b>Fuel Consum. (Combined):</b>	72.4MPG
<b>Fuel Tank Capacity:</b>	53L
<b>Number Of Gears:</b>	6 SPEED
<b>Top Speed:</b>	132MPH
<b>Acceleration 0-100 km/h:</b>	8.9s
<b>Engine Power BHP:</b>	147.5BHP

rear view mirror, Electronic parking brake, ESP with Hill Assist, Follow me home headlights, Front and rear curtain airbags, Front headrests, Front parking sensors, Front passenger SMART airbag with deactivate switch, Front seat back map pockets, Front side airbags, Height/reach adjust steering wheel, High gloss black door mirrors, Intermittent rear wash/wipe, Isofix on 2nd row rear seats, Leather gearshift, Leather steering wheel with red stitching, LED daytime running lights, LED front fog lights, LED Headlights, LED rear lights, Locking wheel bolts, Peugeot connect with USB and bluetooth, Rear headrests, Rear parking sensor, Remote control central locking, Reversing camera, Rolling code transponder immobiliser, Service interval indicator, Steering column mounted multifunction controls, Thatcham cat 1 ultrasonic alarm, Tinted rear windscreen, Touch screen display, Trip computer, Twin exhaust tailpipe