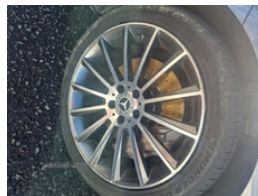
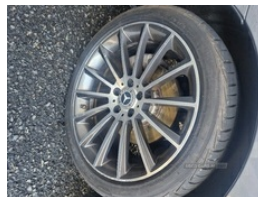


33Low Road, Newry, BT35 8RH
07794426535

Mercedes CLS-Class CLS 350d 4Matic AMG Line Premium + 4dr 9G-Tronic | Apr 2018

£20,400 O.N.O



Vehicle Features

1/3 to 2/3 split folding rear seats, 2 way rear head restraints, 3 point seatbelts, 3 rear seats, 3 spoke flat bottom AMG steering wheel in nappa leather, 4 way adjustable front head restraints, 360 camera with remote parking assist, ABS with Brake Assist, Active park assist, Adaptive brake lights, Adaptive brake system, Agility control lowered suspension with selective damping system, Alarm system/interior protection/immobiliser, Ambient lighting, AMG bodystyling, AMG floormats, AMG sports seats, Analogue clock, Artico man-made leather upper dash trim with contrast stitching, Attention assist, Auto dimming door mirrors, Auto dimming rear view mirror, Automatic headlights with high beam assist, Auto Mercedes-Benz child seat recognition sensor, Bag hook in luggage compartment, Black roof liner, Body colour door mirrors, Body coloured bumpers, Brake calipers with Mercedes-Benz lettering + perforated brake discs, Brake wear warning light, Burmester surround sound system with 13 speakers, Centre armrest and door handle illumination, Child proof door locks, Chrome door handles, Chrome door pins, Chrome surround electric key, Cockpit display 12.3" widescreen digital instrument cluster, Collision prevention assist plus, COMAND online system, Crash sensor (auto door unlocking),

Miles:	67607
Fuel Type:	Diesel
Transmission:	Automatic/Other
Colour:	Grey
Engine Size:	2925
Tax Band:	Petrol/Diesel (£190 p/a)
Body Style:	Coupe
Reg:	LXZ6912

Technical Specs

DIMENSIONS	
Length:	4996mm
Width:	1896mm
Height:	1436mm
Seats:	5
Luggage Capacity (Seats Up):	520L
Gross Weight:	2545KG
Max. Loading Weight:	610KG

PERFORMANCE & ECONOMY	
Fuel Consum. (Urban Cold):	41.5MPG
Fuel Consum. (Extra Urban):	54.3MPG
Fuel Consum. (Combined):	48.7MPG
Fuel Tank Capacity:	66L
Number Of Gears:	9 SPEED
Top Speed:	155MPH
Acceleration 0-100 km/h:	5.7s
Engine Power BHP:	281.6BHP

Cruise control + speed limiter, DAB Digital radio, Diesel particulate filter, Driver/Front Passenger airbags, Drivers knee airbag, Dual zone climate control, Elec heated + adjust door mirrors, Electric folding door mirrors, Electric front/rear windows with one touch/anti pinch, Electric glass sunroof, Electronic parking brake, Front and rear curtain airbags, Front and rear door pockets, Front and rear parking sensors, Front centre armrest with storage compartment, Front cupholders, Front seat back map pockets, Front seats cushion depth adjustment, Front side airbags, Headlight washers, Heated front seats, Heated windscreen wash system, Height/reach adjust steering wheel, Hill start assist, Instrument cluster, Intelligent LED headlight system with active cornering lights, Interior rear light/integral reading lights, Isofix rear child seat fastenings, Keyless Go access/ignition system, Leather gear knob, LED daytime running lights, LED rear lights, Locking wheel bolts, Memory pack - CLS, Mercedes connect me, Multi function steering wheel, Multi function trip computer, Net on luggage compartment floor, Open pore grey ash wood centre console, Open pore grey ash wood dashboard and door trim, Outside temperature gauge, Overhead console with sunglasses holder, Polished aluminium waistline, Pre-Safe anticipatory safety system, Rain sensor windscreen wipers, Rear armrest with storage + cupholders, Rear courtesy lights, Rear seatbelt warning indicator, Remote boot closing, Remote boot release, Remote central locking, SD card based satellite navigation system, SD card slot, Service indicator (ASSYST), Smartphone integration with Apple CarPlay and Android auto, Sports pedals with stainless steel surfaces and rubber studs, Steering wheel gearshift paddles, Storage compartment under load area floor, Sunvisors with illuminated vanity mirrors, Tinted glass, Touchpad with control wheel, Tyre pressure monitoring system, Visible twin exhaust tailpipe in bumper, Warning triangle and first aid kit, Welcome lighting, Window airbags