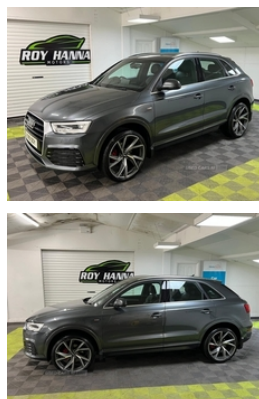


Audi Q3 2.0 TDI [184] Quattro S Line 5dr | 2015

****SORRY NOW SOLD****

£13,450



A truly beautiful 2015 Audi Q3 S Line ready for viewing at Roy Hanna Motors!

2 Keys.

MOT til 29th July 2024.

A part service history with stamps at -
~ 57,514 miles.

This car will be fully serviced and have a full multi point pre delivery check for its new owners.

****Brand new 20" Alloy Wheels & Tyres are an optional extra****
*** We have a variety of wheels to chose from for each vehicle***

This model is packed full of factory extras like -

- ~ 6.5" colour display screen.
- ~ Information display system.
- ~ Front and rear electric windows.
- ~ Rear tinted windows.
- ~ Bluetooth hands free telephone connection.
- ~ Front fog lights.
- ~ Front sports seats.
- ~ Twin exhaust tailpipe.
- ~ Remote electric boot opening/closing.
- ~ Voice control system.
- ~ Remote central locking.
- ~ Climate and traction controls.
- ~ Steering wheel mounted controls.
- ~ AUX & USB connectivity.

Miles:	60300
Fuel Type:	Diesel
Transmission:	Manual
Colour:	Grey
Engine Size:	1968
CO2 Emission:	143
Tax Band:	F (£210 p/a)
Body Style:	Sport utility vehicle
Insurance group:	24E
Reg:	KX1500Y

Technical Specs

DIMENSIONS	
Length:	4388mm
Width:	1831mm
Height:	Not Availablemm
Seats:	5
Luggage Capacity (Seats Up):	420L
Gross Weight:	2205KG
Max. Loading Weight:	600KG

PERFORMANCE & ECONOMY	
Fuel Consum. (Urban Cold):	42.2MPG
Fuel Consum. (Extra Urban):	60.1MPG
Fuel Consum. (Combined):	51.4MPG
Fuel Tank Capacity:	64L
Number Of Gears:	6 SPEED
Top Speed:	136MPH
Acceleration 0-100 km/h:	7.9s
Engine Power BHP:	181BHP

- ~ CD/Radio Player.
- ~ Body Coloured Bumpers.
- ~ Electric windows.

*We Have Many Different Finance HP & PCP Deals Available To Suit Your Budget, You Can Drive Away In Your New Car With £0 Deposit & Pay Nothing For 2 Full Months!

*For A Personalised Quote Give Us A PM / Text / Call Or Propose Yourself For Finance On Our Website

*All Usual Dealer Facilities Available.

*Credit/Debit Cards Accepted.

*Trade Ins Welcome.

*Every Vehicle Comes With Warranty.

*Every Vehicle Comes With A Multi Point Health Check, Full Service & Put Out Fully Valeted/Polished.

Roy Hanna Motors
219 Lisnevenagh Road
Antrim
BT412JT

Vehicle Features

3 spoke multi-function Q design steering wheel, 3x3 point rear seatbelts, 6.5" colour display screen, ABS+Electronic Brake force Distribution, Acoustic windscreen, Aluminium door sill trims, Aluminium window surround, Audi drive select, Audi music interface, Black cloth headlining, Body colour door mirrors, Body coloured bumpers, Chrome exhaust tailpipe, Chrome fog light surround, Chrome grille, Coming home function, Curtain airbags, DAB digital radio module, Diesel particulate filter, Door mirror integrated indicators, Driver and passenger airbags, Driver and passenger side airbags, Dual zone climate control, EDL + ASR, Electrically operated child locks on rear doors, Electric front lumbar adjustment, Electromechanical parking brake, ESP, First aid kit, Front and rear electric windows, Front and rear headrests, Front and rear velour floor mats, Front centre armrest with storage compartment and angle adjustment, Front fog lights, Front passenger airbag deactivation, Heated windscreen washer jets, Height/reach adjust steering wheel, Height adjustable front seats, ISOFIX on front passenger and rear outer seats, Jack and tool kit, LED daytime running lights, LED headlights with headlight washers, Light and rain sensor for auto activation of lights and windscreen wipers, Loading sill protector in stainless steel, Locking wheel bolts, Low washer fluid indicator, Matt brushed aluminium fascia and door trim inlays, MMI - Multi Media Interface control system, On board computer,

PAS, Rear wiper, Remote central locking, Remote electric boot opening/closing, Retractable luggage cover, Seatbelt warning light, Service interval indicator, S Line body styling, Split fold rear seat, Sunband for windscreen, Thatcham category 1 alarm + immobiliser, Towbar preparation, Tyre pressure monitoring system, Under floor storage in luggage area, Voice control system, Warning triangle