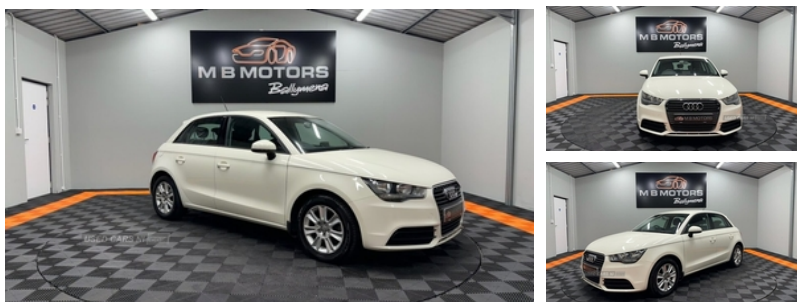




Audi A1 1.6 TDI SE 5dr | Apr 2012

****MOT MAY 2025****

£5,995



This car comes with... - Full Vehicle Health Check - RAC Warranty Option Available inc UK & ROI - Fully Serviced - HPI Report - Valeted - Fuel - Ready to Drive away.... **Delivery Available anywhere in the UK & Ireland**

Vehicle Features

15" 7 arm design alloy wheels, ABS/EBD, Adjustable rear head restraints, Anti-lock Braking System/EBD, Body colour door mirrors with integral indicators, Body coloured bumpers, DAB Digital radio, Driver/Front Passenger airbags, Driver and passenger side airbags, Dynamic suspension, EDL, Electric adjustable door mirrors, Electric front windows, Electric rear windows, ESP with ASR, First aid kit, Front and rear seatbelt reminder, Front floor mats, Front head restraints, Front passenger airbag deactivation, Head airbags, Heated door mirrors, Heated rear windscreen, Heat insulating glass, Height adjustable front seatbelts, Height adjustable front seats, Illuminated glovebox, Isofix attachments on rear seats, Locking wheel bolts, PAS, Power Assisted Steering, Rake/reach adjustable steering wheel, Rear wiper, Remote control central locking, Service interval indicator, Split folding rear seats, Thatcham category 1 alarm + immobiliser, Tyre pressure monitor, Tyre repair kit, Warning triangle

Miles:	85000
Fuel Type:	DIESEL
Transmission:	Manual
Colour:	White
Engine Size:	1598
CO2 Emission:	99
Tax Band:	A (£0 p/a)
Body Style:	Hatchback
Insurance group:	14E
Reg:	JFZ4781

Technical Specs

DIMENSIONS	
Length:	3954mm
Width:	1746mm
Height:	1422mm
Seats:	5
Luggage Capacity (Seats Up):	270L
Gross Weight:	1655KG
Max. Loading Weight:	490KG

PERFORMANCE & ECONOMY	
Fuel Consum. (Urban Cold):	64.2MPG
Fuel Consum. (Extra Urban):	83.1MPG
Fuel Consum. (Combined):	74.3MPG
Fuel Tank Capacity:	45L
Number Of Gears:	5 SPEED

Top Speed:	118MPH
Acceleration 0-100 km/h:	10.7s
Engine Power BHP:	103.3BHP