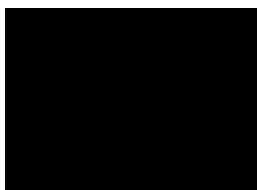
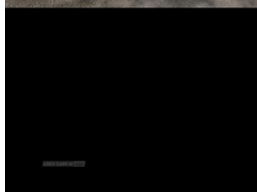
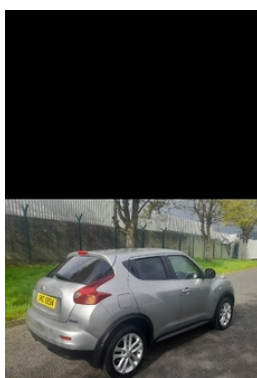


## Nissan Juke 1.5 dCi Acenta 5dr [Premium Pack] [Start Stop] | May 2013

VERY CLEAN #SAT NAV

# £3,995



2013 NISSAN JUKE 1.5 DCI  
ACENTA PREMIUM SATNAV  
FULL MOT  
2 KEYS  
FULL HISTORY  
THE CAR HAS JUST HAD A FULL SERVICE NEW TIMING BELT  
WATERPUMP  
CLUTCH AND FLYWHEEL  
AND 2 NEW FRONT TYRES

### Vehicle Features

Miles:	108000
Fuel Type:	Diesel
Transmission:	Manual
Colour:	Silver
Engine Size:	1461
Body Style:	Sport utility vehicle
Insurance group:	17E
Reg:	SNZ6934

### Technical Specs

DIMENSIONS	
Length:	4135mm
Width:	1765mm
Height:	1565mm
Seats:	5
Luggage Capacity (Seats Up):	251L
Gross Weight:	1765KG
Max. Loading Weight:	470KG

PERFORMANCE & ECONOMY	
Fuel Consum. (Urban Cold):	61.4MPG
Fuel Consum. (Extra Urban):	76.3MPG
Fuel Consum. (Combined):	70.6MPG
Fuel Tank Capacity:	46L
Number Of Gears:	6 SPEED
Top Speed:	109MPH
Acceleration 0-100 km/h:	11.2s
Engine Power BHP:	108.6BHP

2 speed wipers+variable intermittent wipe, 12V socket, 17" Sport alloy wheels, 60/40 split folding rear seat, ABS + EBD + EBA, Aux input, Bluetooth system, Body colour bumpers, Body colour door mirrors and handles, Child locks on rear doors, Climate control, Cruise control + speed limiter, Driver and passenger airbags, Driver and passenger side airbags, Electric door mirrors, Electric front/rear windows, Electric speed sensitive power steering, ESP + traction control, Front and rear curtain airbags, Front cupholders x 2, Front door pockets with bottle holders, Front fog lights, Front head restraints, Front seat belt pre-tensioners with load limiters, Glovebox, Height adjustable driver's seat, Height adjustable front seatbelts, Illuminated footwell, Immobiliser, Internal chrome door handles, Isofix child seat preparation, Leather steering wheel and gear knob, Luggage area under floor storage box, Map reading lamp, Passenger airbag deactivate switch, Passenger seat back pocket, Premium pack - Juke, Rear headrests, Rear tonneau cover integrated into tailgate, Rear wiper, Remote central locking, Service interval indicator, Sports seats, Steering wheel mounted audio controls, Steering wheel rake adjustment, Stereo radio/CD player and MP3 facility, Three 3 point rear seatbelts, Trip computer, USB port