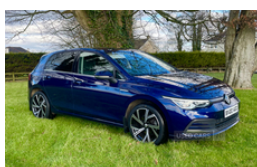


Volkswagen Golf 2.0 TDI 150 Style 5dr DSG | Aug 2020

****ONE OWNER** FSH****

£13,850



2020 Vw Golf MK8 2.0 TDI 150 Style DSG, 5-door in stunning Atlantic blue metallic.

One company owner from new and has covered just 94000 miles.

Comes with a full up to date service history, with the last service at 91000 miles.

Has great spec including:

- *Front and rear LED Lights*
- *Front and rear parking sensors*
- *Front sports seats*
- *Digital cockpit pro*
- *Wireless charging*
- *Rear Privacy glass*
- *Ambient lighting*
- *Lane change assistant*
- *New 18" Alloys, optional extra £650*

This 2020 VW Golf 2.0 TDI Style DSG strikes a strong balance across performance, refinement, and economy.

No additional Vat or Customs duty charges for export.

VRT for ROI is €3646.

Great value at only £13850.

Tel. 07710 627700

Miles:	94000
Fuel Type:	Diesel
Transmission:	Automatic/Other
Colour:	Atlantic Blue metallic
Engine Size:	1968
Tax Band:	Petrol/Diesel (£195 p/a)
Body Style:	Hatchback
Reg:	BX20AGO

Technical Specs

DIMENSIONS	
Length:	4284mm
Width:	1789mm
Height:	1491mm
Seats:	5
Luggage Capacity (Seats Up):	380L
Gross Weight:	1960KG
Max. Loading Weight:	570KG

PERFORMANCE & ECONOMY	
Fuel Consum. (Combined):	60.1MPG
Fuel Tank Capacity:	50L
Number Of Gears:	7 SPEED
Top Speed:	139MPH
Acceleration 0-100 km/h:	8.8s
Engine Power BHP:	147.5BHP

Vehicle Features

3 point height adj front seatbelts + pretensioners, 3 rear head restraints, 3 rear three point seatbelts, 12V socket in front centre console, 12V socket in luggage compartment, ABS, Adaptive cruise control ACC with speed limiter and front assist (reacting to vehicles, Alarm with interior protection and deactivation via infotainment system, Ambient lighting - Customisable 30 colour ambient lighting, Art Velour cloth upholstery + front sports comfort seats, Auto dimming rear view mirror, Automatic headlamp activation with Coming home and Leaving home feature, Body colour bumpers, Body colour door handles, Body colour door mirrors with integrated indicators, Body colour rear roof spoiler, Car2X communication, Centre console, Climate control - 3 Zone electronic air conditioning with automatic air recirculation, Diesel particulate filter, Digital cockpit, Driver alert system, Driver and front passenger airbag with front passenger airbag deactivation, Drivers and front passengers safety optimised head restraints, Drivers and front passengers sun visors with vanity mirrors, Dust/pollen filter, Dynamic road sign display, eCall - Emergency call service for SOS calls to emergency response, Electrically heated and adjustable door mirrors with memory feature, Electronic engine immobiliser, electronic odometer, Electronic parking brake with auto hold, ESC (Electronic Stability Control), Extended pedestrian protection measures, exterior temperature and fuel gauge, Front + rear carpet mats, Front and rear electric windows, Front and rear foot well interior light, Front and rear passengers curtain airbag system including front side airbags, Front centre armrest with storage compartment, Front cupholders x 2, Front disc brakes, Front fog lights with static cornering function and poor weather lighting, Front seat lumbar support adjuster, Glovebox, Heated rear windscreen, Heat insulating glass windscreen, Height adjustable front seats, Height and reach adjustable steering wheel, High level 3rd brake light, Highway light, Illuminated front grille, Isofix child seat preparation for 2 rear child seats and front passenger seat, Lane assist, LED front reading lights X 2, LED License plate illumination, Luggage compartment lighting, Luxury brown wood decorative inserts, Mobile phone interface with wireless inductive charging function, pedestrians and cyclists), Premium USB cable in choice of either Apple or Android smartphone compatibility, Rain sensor, Rear disc brakes, Rear fog light on one side and reversing lights on both sides, Rear lights incorporating LED technology, Rear windscreen washer and wiper with interval delay, Removable luggage compartment cover, rev counter, service interval display, Soul dashboard, Speedo, Split folding backrest with centre armrest and unsplit rear seat bench, Start/Stop function, Storm grey roof lining, Travel assist with emergency side assist with electrically foldable door mirrors, trip, Two tone horn, Tyre

pressure monitoring system, Warning buzzer and light for front seatbelts unfastened, Welcome light, Wireless app connect, Woven fabric storage compartments in front and rear doors, XDS electronic differential lock for improved traction and handling